

## LISTENING TEST

In the Listening Test, you will be asked to demonstrate how well you understand spoken English. The entire Listening Test will last approximately 45 minutes. There are four parts, and directions are given for each part. You must mark your answers on the separate answer sheet. Do not write your answers in the test book.

### PART 1

**Directions:** For each question in this part, you will hear four statements about a picture in your test book. When you hear the statements, you must select the one statement that best describes what you see in the picture. Then find the number of the question on your answer sheet and mark your answer. The statements will not be printed in your test book and will be spoken only one time. Look at the example item below.

#### Examples



Statement (B), "The man is signing his name," is the best description of the picture, so you should select answer (B) and mark it on your answer sheet.

1



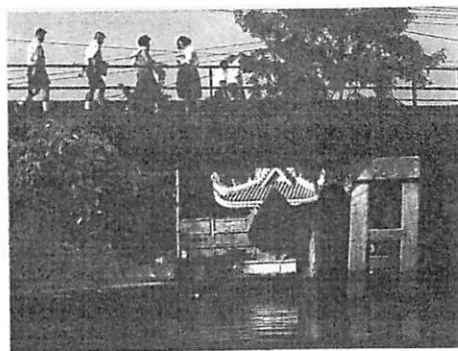
2



3



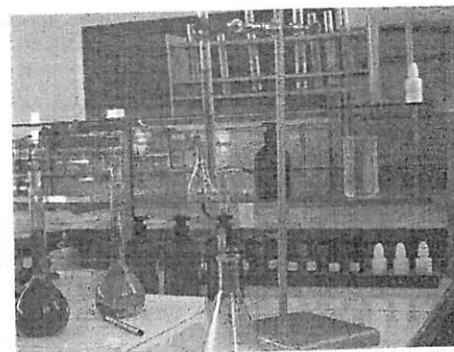
4



5



6



7



8



9



10



### PART 2

**Directions:** You will hear a question or statement and three responses spoken in English. They will be spoken only one time and will not be printed in your test book. Select the best response to the question or statement and mark the letter (A), (B), or (C) on your answer sheet.

#### Examples

- You will hear: Where is the meeting room?  
 You will also hear:  
 (A) To meet the new director.  
 (B) It's the first room on the right.  
 (C) Yes, at two o'clock.

The best response to the question "Where is the meeting room?" is choice (B), "It's the first room on the right." So (B) is the correct answer. You should mark answer (B) on your answer sheet.

11. Mark your answer on your answer sheet.
12. Mark your answer on your answer sheet.
13. Mark your answer on your answer sheet.
14. Mark your answer on your answer sheet.
15. Mark your answer on your answer sheet.
16. Mark your answer on your answer sheet.
17. Mark your answer on your answer sheet.
18. Mark your answer on your answer sheet.
19. Mark your answer on your answer sheet.
20. Mark your answer on your answer sheet.
21. Mark your answer on your answer sheet.
22. Mark your answer on your answer sheet.
23. Mark your answer on your answer sheet.
24. Mark your answer on your answer sheet.
25. Mark your answer on your answer sheet.
26. Mark your answer on your answer sheet.
27. Mark your answer on your answer sheet.
28. Mark your answer on your answer sheet.
29. Mark your answer on your answer sheet.
30. Mark your answer on your answer sheet.
31. Mark your answer on your answer sheet.
32. Mark your answer on your answer sheet.
33. Mark your answer on your answer sheet.
34. Mark your answer on your answer sheet.
35. Mark your answer on your answer sheet.
36. Mark your answer on your answer sheet.
37. Mark your answer on your answer sheet.
38. Mark your answer on your answer sheet.
39. Mark your answer on your answer sheet.
40. Mark your answer on your answer sheet.

### PART 3

**Directions:** You will hear some conversation between two people. You will be asked to answer three questions about what the speakers say in each conversation. Select the best response to each question and mark the letter (A), (B), (C), or (D) on your answer sheet. The conversations will be spoken only one time and will not be printed in your test book.

41. Where are these people?  
 (A) At an office  
 (B) At an office supply store  
 (C) At a warehouse  
 (D) At a trade show
42. What is the woman's reaction to the man's products?  
 (A) She thinks they're unique.  
 (B) She doesn't like them.  
 (C) She's seen other similar products.  
 (D) She thinks they're very cheap.
43. According to the man, what does his company have that others do not?  
 (A) Low prices  
 (B) A range of items  
 (C) Superior service  
 (D) A new set of office stationery
44. What are the people discussing?  
 (A) Packing methods  
 (B) Marketing issues  
 (C) A shipping policy  
 (D) A delivery problem
45. How many crates was the woman supposed to receive?  
 (A) One  
 (B) Three  
 (C) Four  
 (D) Nine
46. How does the man react to the problem?  
 (A) He blames his coworker.  
 (B) He accepts responsibility.  
 (C) He refuses to do anything.  
 (D) He asks the woman for help.
47. When did the purse disappear?  
 (A) While the woman was trying on clothes  
 (B) While the woman was sitting down  
 (C) While the woman was paying for something  
 (D) While the woman was talking to the man
48. What can be inferred about the woman?  
 (A) She didn't have anything valuable in her purse.  
 (B) She's eager to retrieve certain items in her purse.  
 (C) She often loses things.  
 (D) She knows where her purse is.



49. What is the man going to do next?  
(A) Call the police  
(B) Find another purse for the woman  
(C) Step into the store to look for the purse  
(D) Examine the security system's video
50. What is Ms. Roberts doing?  
(A) Interviewing a job applicant  
(B) Scolding an employee  
(C) Explaining a job duty  
(D) Compiling a report
51. Which department has the most complex accounting issues?  
(A) Fashion accessories  
(B) Travel accessories  
(C) Home appliances  
(D) Office appliances
52. How does Ms. Lincoln feel about her job responsibilities?  
(A) Confident  
(B) Uneasy  
(C) Unqualified  
(D) Grateful
53. How many nights will the man be in San Francisco?  
(A) Three  
(B) Four  
(C) Five  
(D) Nine
54. Which of the following is NOT requested by the man?  
(A) An extra bed  
(B) A smoking room  
(C) A room with a nice view  
(D) A single room
55. What is the nightly rate for a business traveler?  
(A) \$90  
(B) \$100  
(C) \$110  
(D) \$400
56. What do we know about Mr. Ito?  
(A) He's Jacky's current boss.  
(B) He's the chairman of the board.  
(C) He was responsible for Denise's promotion.  
(D) He doesn't think Jacky was a good employee.
57. What can be inferred about Jacky?  
(A) He was a valuable employee.  
(B) He didn't work at the company very long.  
(C) He was in upper management.  
(D) He was good friends with Denise.
58. What must happen before Denise is promoted again?  
(A) Jacky must leave his position.  
(B) Mr. Ito has to replace Denise.  
(C) Approval needs to come from the board.  
(D) Denise must submit an application.
59. Where are these people?  
(A) In a cave  
(B) On a farm  
(C) At a museum  
(D) In a hospital
60. What is the man's likely profession?  
(A) Doctor  
(B) Museum guide  
(C) Potter  
(D) Florist
61. What were the herbs probably used for?  
(A) A source of food  
(B) A type of medicine  
(C) A base for making paint  
(D) A kind of decoration
62. Why were some guests complaining?  
(A) The food was poor.  
(B) The man was being noisy.  
(C) The music was too loud.  
(D) The woman was causing trouble.
63. What can be inferred about the man?  
(A) He rarely eats at the restaurant.  
(B) He's a frequent customer.  
(C) He often eats in the private rooms.  
(D) He's used to people complaining about him.
64. How does the man feel about moving to a private room?  
(A) He's willing to move.  
(B) He's very upset.  
(C) He refuses to move.  
(D) He wants to consider it.
65. What field does the man work in?  
(A) Marketing  
(B) Distribution  
(C) Product design  
(D) Administration
66. How do the man and woman view cooperation between departments?  
(A) They think it's helpful.  
(B) They're concerned it takes up too much time.  
(C) They don't understand the strategy.  
(D) They think it benefits the marketing department only.
67. What does the woman plan to do?  
(A) Transfer to another department  
(B) Talk to a supervisor about a new product  
(C) Attend the man's presentation  
(D) Make a suggestion to her boss
68. What are the speakers discussing?  
(A) Shipping methods  
(B) Causes of production delays  
(C) An agreement breach  
(D) Contract terms
69. Based on the man's currently offered price, how much would four kilograms cost?  
(A) \$16  
(B) \$25  
(C) \$100  
(D) \$10,000
70. Which of these costs cannot be adjusted?  
(A) The service cost  
(B) The item cost per kilogram  
(C) The packaging cost  
(D) The shipping cost

#### PART 4

**Directions:** You will hear some short talks given by a single speaker. You will be asked to answer three questions about what the speaker says in each short talk. Select the best response to each question and mark the letter (A), (B), (C) or (D) on your answer sheet. The talks will be spoken only one time and will not be printed in your test book.

71. What is the main purpose of this announcement?  
 (A) To predict the path of a hurricane  
 (B) To warn people of an oncoming weather system  
 (C) To assess the potential damage of a hurricane  
 (D) To recommend ways to prepare for any natural disaster
72. When are the wind speeds expected to be strongest?  
 (A) At midnight tonight  
 (B) At 8:00 the following morning  
 (C) Some time tomorrow night  
 (D) Two days from now
73. Which of these reckless activities is NOT mentioned?  
 (A) Swimming in the ocean  
 (B) Observing the turbulent waves  
 (C) Flying over the coast  
 (D) Playing games in the water
74. When would you expect to hear this report?  
 (A) During the entertainment news  
 (B) During the reporting of the headline news  
 (C) During a financial report  
 (D) During a report about a foreign country
75. What is a good predictor of violent crime?  
 (A) The economy of the country  
 (B) The global economy  
 (C) The white collar crime rate  
 (D) The general health of the people
76. What type of crime could be inferred to be on the rise?  
 (A) Armed robbery  
 (B) Rape  
 (C) Corporate embezzlement  
 (D) Murder
77. Who is delivering this speech?  
 (A) A critic of the proposed project  
 (B) The owner of a construction company  
 (C) A local politician  
 (D) A groundbreaking inventor
78. What is the purpose of the new development?  
 (A) To generate business from visiting dignitaries  
 (B) To revitalize a depressed area  
 (C) To provide a recreational venue for the local population  
 (D) To provide jobs for local residents

79. What can be inferred about the community center?  
 (A) Few local residents are opposed to it.  
 (B) It will be very expensive to build.  
 (C) It took five decades to gain approval.  
 (D) It is primarily designed for children.
80. What is the speaker's tone?  
 (A) Arrogant  
 (B) Accusing  
 (C) Competitive  
 (D) Modest
81. How does the speaker regard Bill Albright?  
 (A) As a subordinate  
 (B) As a fellow marketer  
 (C) As a teacher  
 (D) As a competitor
82. What did Bill Albright tell the speaker?  
 (A) It's important to work as a team.  
 (B) Trusting others can be dangerous.  
 (C) Nobody knows why we succeed or fail.  
 (D) Winning awards is the key to success.
83. Who is the intended audience?  
 (A) Cruise boat captains  
 (B) Passengers on a boat  
 (C) Victims of an accident at sea  
 (D) Children on vacation
84. What does the speaker say about children?  
 (A) They are not allowed onto the deck.  
 (B) They should be closely watched constantly.  
 (C) They will require close supervision at times.  
 (D) They are especially at risk inside the cabins.
85. What will result from a red handle being pulled?  
 (A) The boat will come to an immediate halt.  
 (B) The nurse will come to the person's aid.  
 (C) An emergency will occur.  
 (D) Someone working on the boat will respond.
86. What is the purpose of the speech?  
 (A) To toast two newlyweds  
 (B) To introduce two people to each other  
 (C) To tell a story about someone  
 (D) To ask questions about the future
87. What can be inferred about the speaker?  
 (A) He's known the bride since college.  
 (B) He works with Martin.  
 (C) He disapproves of the marriage.  
 (D) He's close friends with the groom.
88. What is the relationship between the speaker and Jessica?  
 (A) They share a close friend.  
 (B) They're best friends.  
 (C) They're brother and sister-in-law.  
 (D) They're husband and wife.
89. How is this announcement probably being delivered?  
 (A) On a radio advertisement  
 (B) On a store's loudspeaker system  
 (C) On a television shopping program  
 (D) On an intercom in a warehouse

100. How can someone communicate with the Office King 100?
- (A) Via the company's network
  - (B) By using an Office King 100 device on their desk
  - (C) Through a special network that comes with the machine
  - (D) Over a wireless receiver connected to the Office King 100

95. Who is the intended audience?
- (A) A group of tourists
  - (B) A busload of city planners
  - (C) A number of office workers
  - (D) A handful of people living in New York City

96. What does the speaker say about the building?
- (A) It currently has one function.
  - (B) It is no longer a functional office building.
  - (C) It takes a long time to get to the top.
  - (D) It is the tallest building in the city.

97. What will happen next?

- (A) The group will visit the Statue of Liberty.
- (B) The bus will stop at a gift shop.
- (C) The people will have something to eat.
- (D) The speaker will lead the people to the top of a building.

90. How much would a garden rake originally priced at \$20 cost?
- (A) \$2
  - (B) \$10
  - (C) \$16
  - (D) \$18

91. Which of these items would be eligible for a coupon discount?
- (A) A shirt with a red sticker on it
  - (B) Something in the home and garden department
  - (C) An item that qualifies for the Super Spring Sale discount
  - (D) A plastic car in the toy aisle

92. Where would you expect to hear this speech?
- (A) At a technology conference
  - (B) At a meeting of advertisers
  - (C) At a company picnic
  - (D) At a holiday party

93. Which advantage of new technologies is NOT mentioned?
- (A) Size
  - (B) Price
  - (C) Power
  - (D) Availability

94. What does the speaker suggest about cell phones?
- (A) They're responsible for the growth of the Internet.
  - (B) They're the cheapest technology on the market.
  - (C) They enable multiple improvements in our lives.
  - (D) They're the main reason for the growth in productivity.

99. What does the speaker imply about traditional offices?

- (A) They're good at saving money.
- (B) They have too many different office machines.
- (C) They've known about the Office King 100 for a long time.
- (D) They have more space than they need.

98. What is the main purpose of this talk?

- (A) To introduce a new office product
- (B) To inquire about an office machine
- (C) To explain the features of a new office building
- (D) To sell an office machine repair service