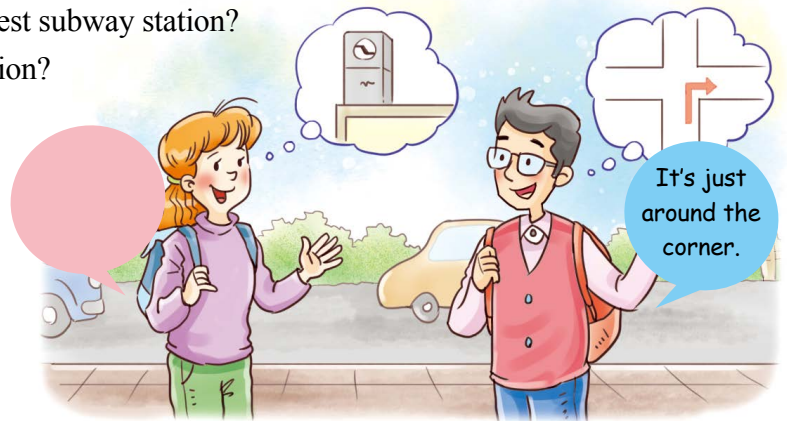


A Look and Choose

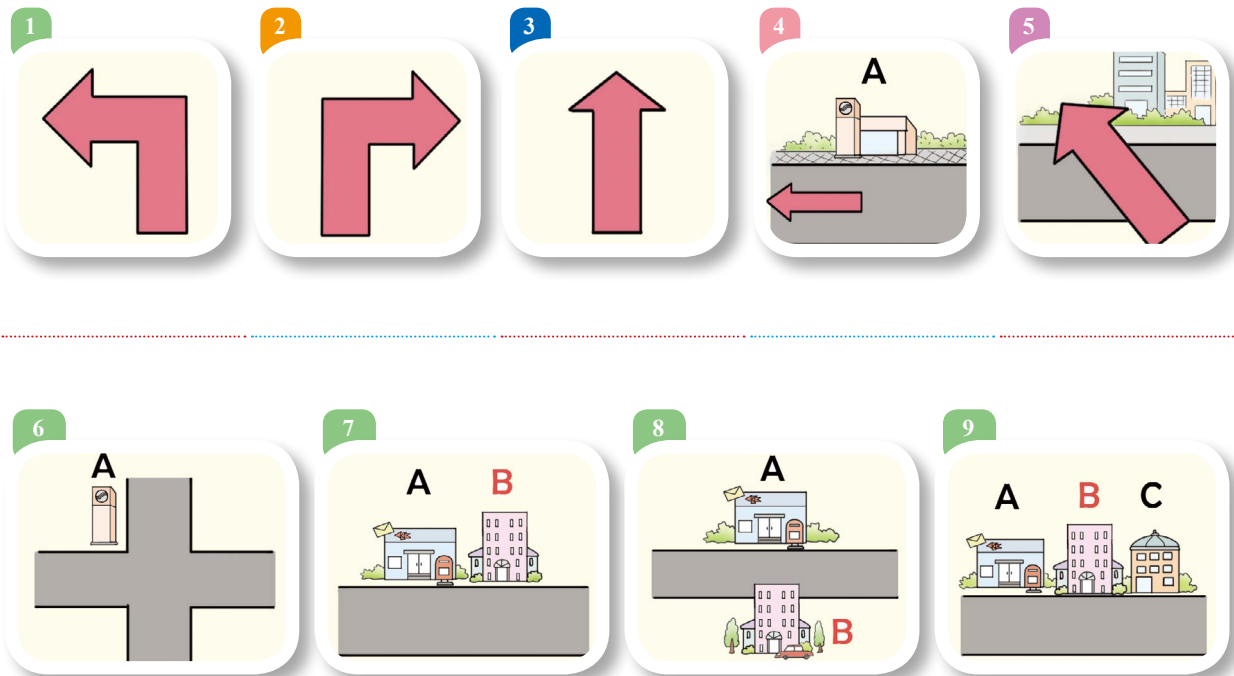
Look at the picture and choose all the questions that could begin the dialog.

- Can you tell me where the nearest subway station is?
- Could you tell me how to get to the closest subway station?
- How can I get to the nearest subway station?
- Are you from around here?
- Where is the closest subway station?



B Look and Write

Look at the pictures and write the correct words or phrases.



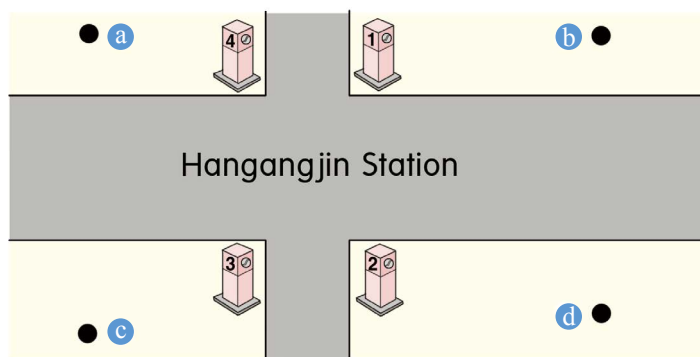
- at the corner of
- next to
- between
- across from
- cross
- turn right
- go past
- turn left
- go straight ahead

Situation 1 | Taking the Subway

Listen and Do

Listen to the dialog and answer the questions. 🎧

- From which station will the man start?
 - a Hapjeong.
 - b Sinchon.
 - c Ahyeon.
- At which station will the man change the subway lines?
 - a Hapjeong.
 - b Sinchon.
 - c Sangsu.
- What is the man's final destination?



Talk Together

Choose two stations from the subway map linked below and make a dialog like the following example. Then, practice it with a partner.

Seoul Metro Map

Starting Point	Destination	Example
City Hall	World Cup Stadium	<p>A: How can I get to <u>World Cup Stadium</u> from <u>City Hall</u> by <u>subway</u>?</p> <p>B: Take the <u>green line</u> at <u>City Hall</u> toward <u>Chungjeong-ro</u>. Then change to the <u>brown line</u> at <u>Hapjeong</u>, and go in the direction of <u>Mangwon</u>. Then go <u>three</u> more <u>stations</u>.</p>
On your own	On your own	<p>A: Just a moment. Can you repeat that?</p> <p>B: Sure. Take the <u>green line</u> at <u>City Hall</u> and change to the <u>brown line</u> at <u>Hapjeong</u>. Go <u>three</u> more <u>stations</u>, and get off at <u>World Cup Stadium</u>. Got it?</p> <p>A: Yes, thanks a lot.</p>

•transfer: 환승하다 •take down: 받아 적다 •repeat: 반복하다

Situation 2 | Asking Directions on the Road

Listen and Do

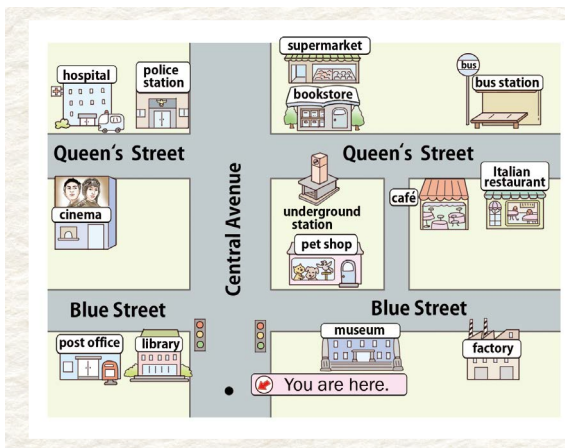
 Listen to the dialog and answer the questions. 

- What does the man ask the woman to do?
 - Tell the man how she went to Korean Folk Village.
 - Compare two ways of getting to Korean Folk Village.
 - Let the man know how to get to Korean Folk Village.
- Number the directions in the correct order.
 - 1 Drive 1.5 kilometers more.
 - 2 Take the exit at Suwon-Singal IC.
 - 4 Turn left at Sanggal Intersection.
 - 3 Turn left at Minsokchon Samgeori.
 - 5 Turn right in the direction of Singal.
 - 1 Enter the expressway at the south of Hannam Bridge.



Talk Together

 Look at the map, and make a dialog like the example. Then practice it with a partner. Use the expressions in the box.



Example

A: Excuse me, can you help me?
 B: Sure. What can I do for you?
 A: Thank you. Could you tell me how to get to the bus station?
 B: Go straight ahead until you get to Queen's Street. At Queen's Street, turn right. Keep going past the underground station and the café. It's across from the Italian restaurant.

- | | | |
|-------------|---------------|---------------------|
| • turn left | • turn right | • go straight ahead |
| • go past | • cross | • at the corner of |
| • next to | • across from | • between |

• Korean Folk Village: 한국 민속촌 • continue: 계속하다 • intersection: 교차로

Field Activity



STEP 1 4명씩 한 모둠을 이루어, 가고 싶은 곳을 정한 후, 그곳까지 가는 방법을 조사해 봅시다.

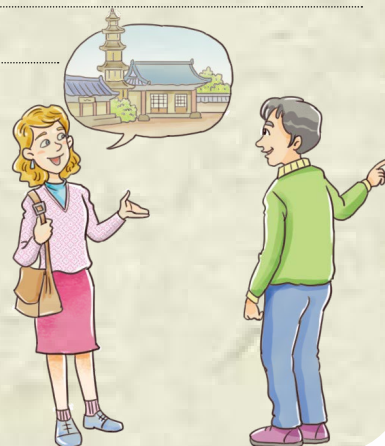
• Where we want to go:

- How to get to _____ from _____.
- We go to (the) _____.
- We take the _____.
- We get off _____.
- We go out _____.



STEP 2 위에서 조사한 내용을 참고하여, 외국인 관광객에게 길을 안내하는 안내문을 만들어 봅시다.

Hello. I'm _____ from _____. I'll tell you how to get to _____
 _____ from _____. First, _____



STEP 3 모둠별로 길을 안내하는 안내문을 발표해 봅시다.

Check Up

A Listen and answer the questions.

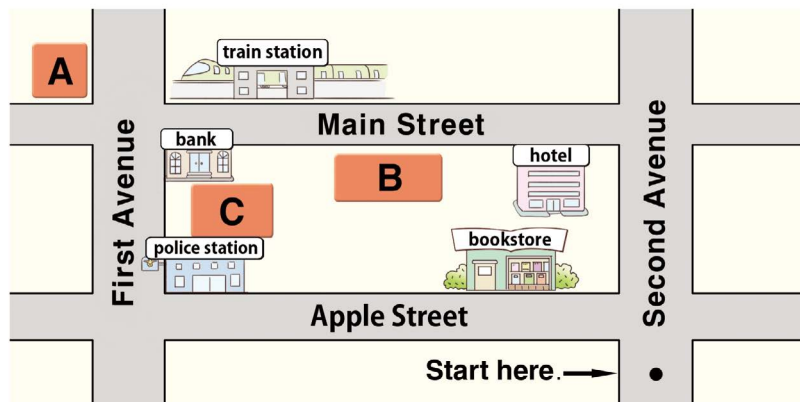
1. Which is the best response to the woman's question?

a

b

c

2. What is the woman's destination?

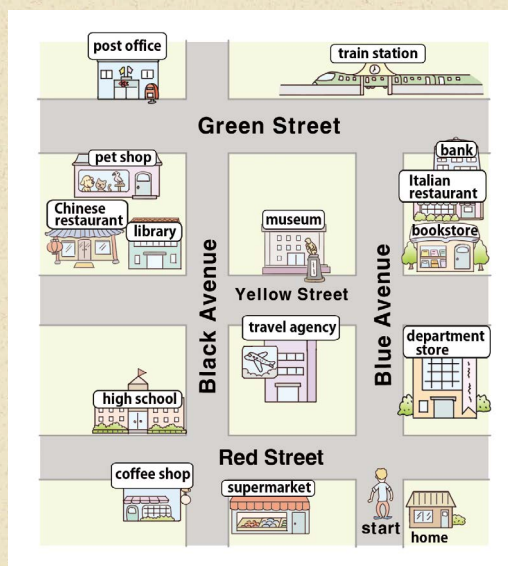


a A

b B

c C

B Look at the map and complete the dialog.



A: How can I get to the museum?

B: Go straight down Blue Avenue, and turn ¹ at Yellow Street. It's ² the travel agency.

A: Then where is the Italian restaurant?

B: Go straight down Blue Avenue, and go ³ Yellow Street. It's ⁴ to the bookstore.

A: I see. Then, can you tell me where the Chinese restaurant is?

B: Go straight ahead and turn left at Red Street. Go down Red Street and turn ⁵ at Black Avenue. Keep going down Black Avenue and turn left at Yellow Street. It's next to the

⁶

Phone Calls and Appointments

**Topics**

- Phone calls
- Appointments

Goals

- How to talk to someone on the phone
- How to make an appointment with someone

Field Activity

- Leaving a message on your customer's voice mail

